

FOR LEASE

340 W. 22nd Street ♦ Norfolk, VA 23517



Property Details:

- 1,060 SF Retail
(including 2nd floor Mezzanine)
- Additional ±400 SF outside patio
- Stand-Alone Building
- Ample parking
- Great Location For Bakery/Coffee Shop

Located in the highly sought after Palace Shops & Station, the premier shopping center in Ghent. Anchored by such retailers as Decorum Furniture, Mattress Firm, and Baker's Crust.

Contact:

Joan Park Buckle: jbuckle@morganregroup.com

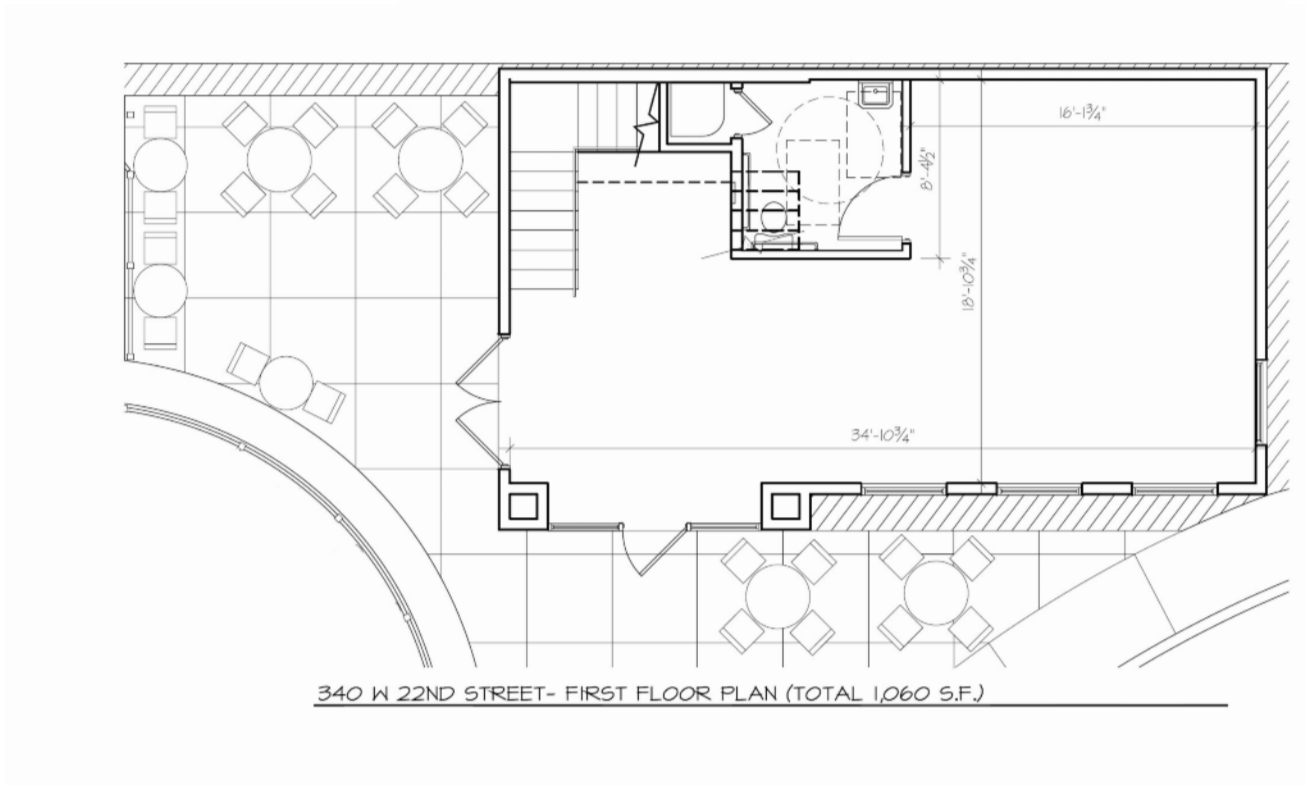
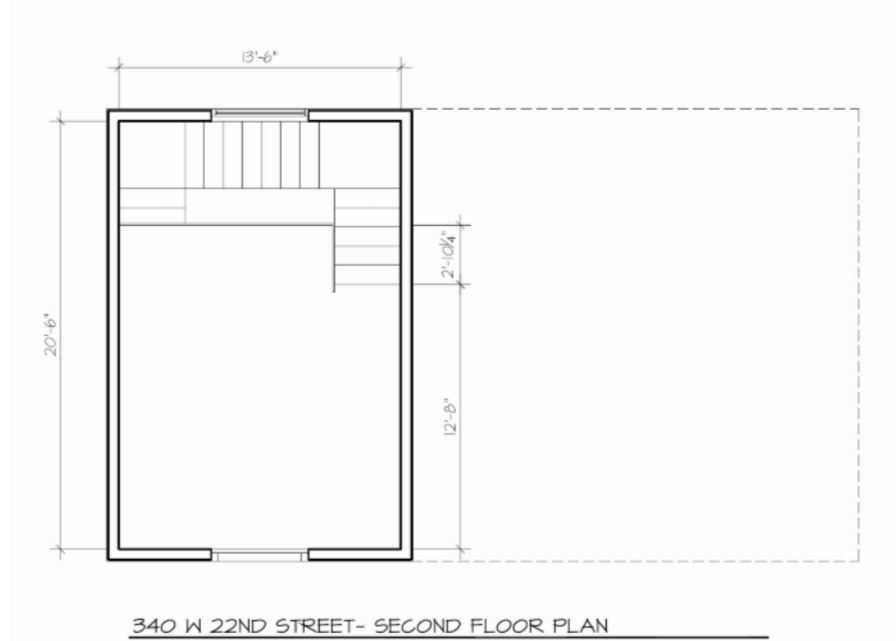
Michelle O'Keefe: mokeefe@morganregroup.com

330 W. 22nd Street, Suite 103 • Norfolk, VA 23517

Phone: (757) 625-2595

www.morganregroup.com

Space Plan



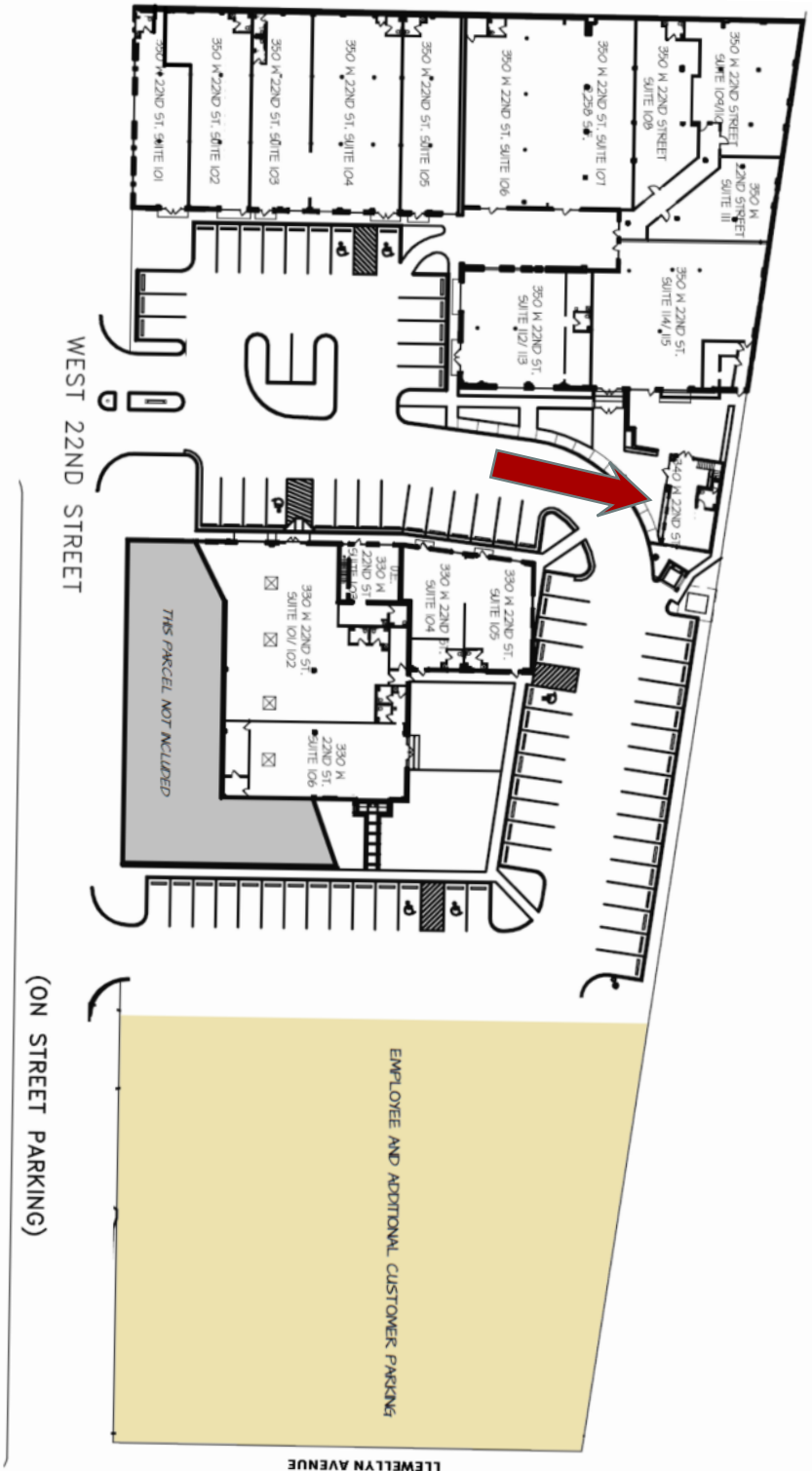
Note: This rendering is not to scale and may not represent the exact layout.

Although the information contained herein was provided by sources believed to be reliable, The Morgan Real Estate Group makes no representation, expressed or implied, as to its accuracy and said information is subject to errors, omissions or changes.

Site Plan

Current Palace Station Tenants:

- Ghent Fit
- G Patton Salon
- Ghent Computer (Mode5)
- Norfolk Integrative Manual Therapy
- Lauren Wolcott CPA
- Net Partners
- Savarna Beauty Spa
- 350 Grace
- AAA
- Mermaid Winery
- The Morgan Real Estate Group



Area Demographics*:

Population: 239,722
 Median Age: 32
 Median Income: \$47,800
 Avg. Income: \$80,054

**Demographic information compiled by zip codes*