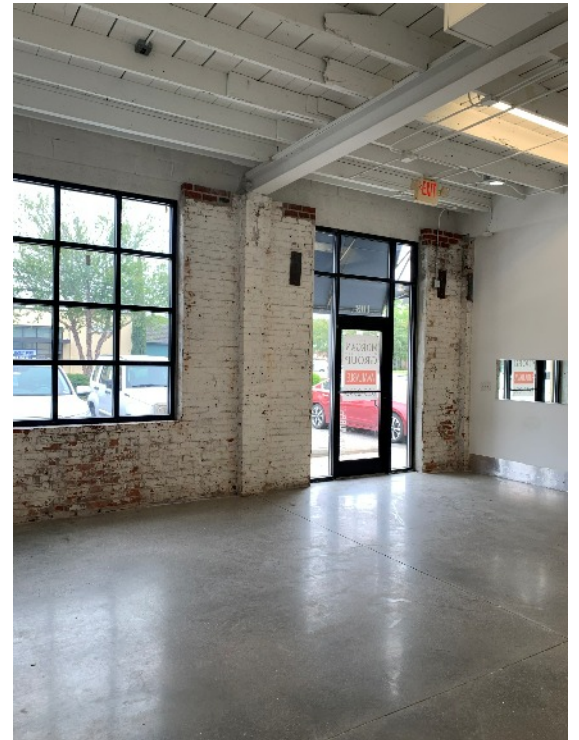


FOR LEASE

350 W. 22nd Street, Ste 103 ♦ Norfolk, VA 23517



Property Details:

- 2,000 SF Retail /Office
- Features exposed ceiling, brick wall, and concrete floors
- Ample parking

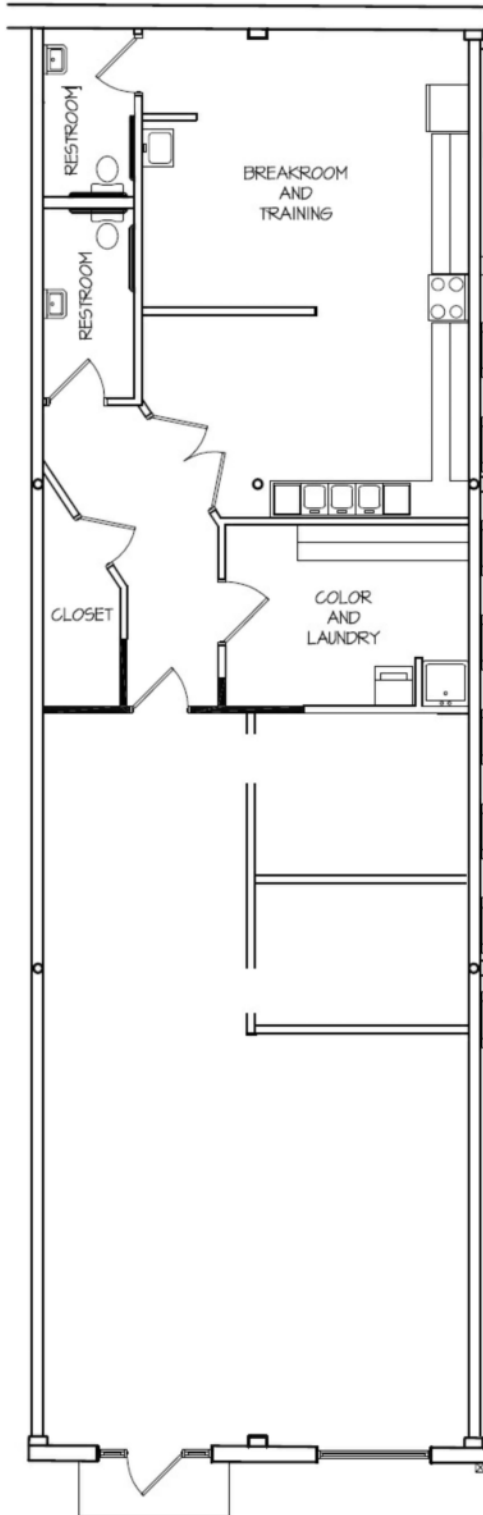
Located in the highly sought after Palace Shops & Station, the premier shopping center in Ghent. Anchored by such retailers as Decorum Furniture, Mattress Firm, and Baker's Crust.

Contact:

Joan Park Buckle: jbuckle@morganregroup.com
Michelle O'Keefe: mokeefe@morganregroup.com

330 W. 22nd Street, Suite 103 • Norfolk, VA 23517
Phone: (757) 625-2595
www.morganregroup.com

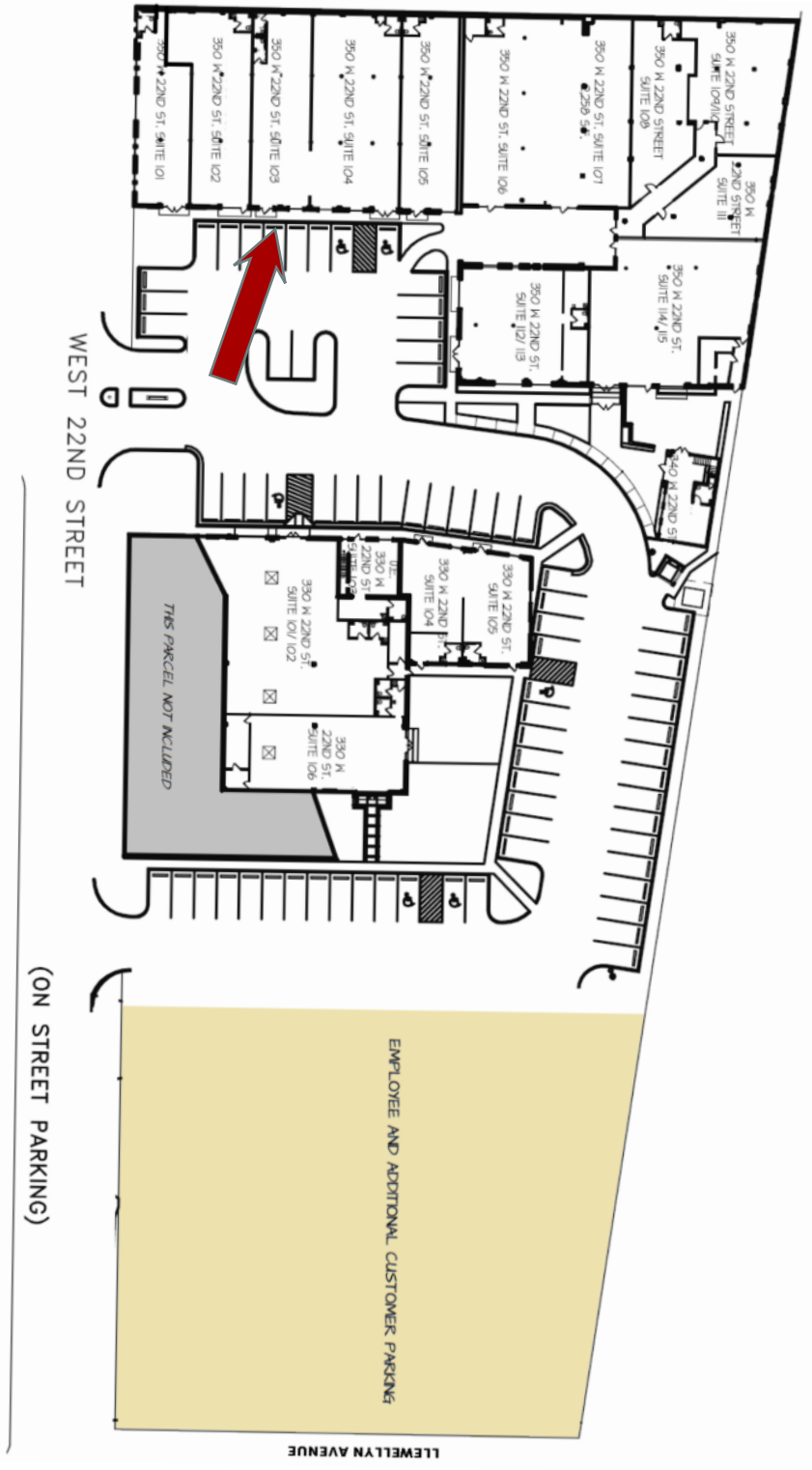
Space Plan



Note: This rendering is not to scale and may not represent the exact layout.

Current Palace Station Tenants:

- Ghent Fit
- G Patton Salon
- Ghent Computer (Mode5)
- Norfolk Integrative Manual Therapy
- Lauren Wolcott CPA
- Net Partners
- Savarna Beauty Spa
- 350 Grace
- Just Cupcakes
- AAA
- Mermaid Winery
- The Morgan Real Estate Group



Area Demographics*:

Population: 239,722
 Median Age: 32
 Median Income: \$47,800
 Avg. Income: \$80,054

**Demographic information compiled by zip codes*